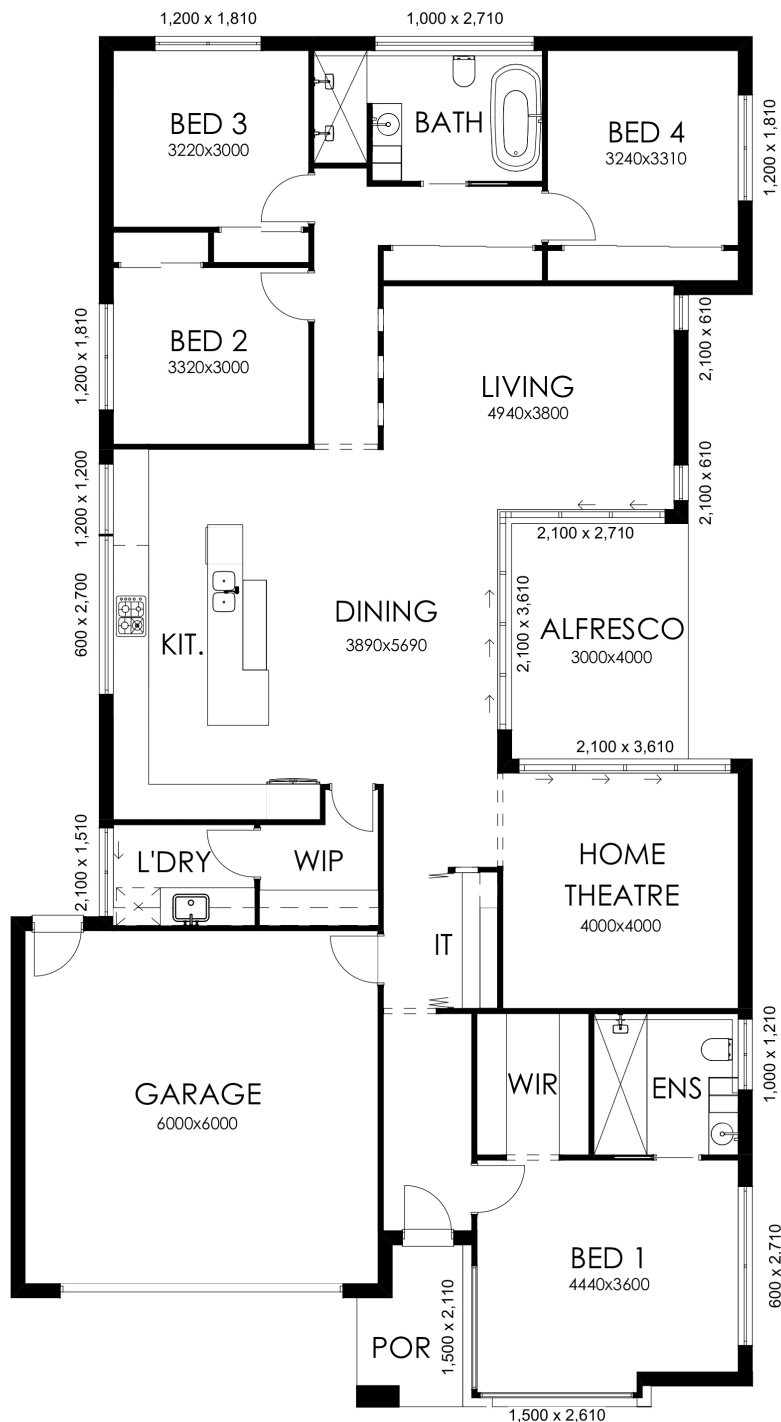


# MAITLAND 250 HAMPTONS



Living	194.11sqm
Garage	39.51sqm
Alfresco	12.00sqm
Porch	4.82sqm
<b>Total Area</b>	<b>250.44sqm</b>

Width: 12.60m

Depth 23.29m

## STANDARD INCLUSIONS

- ✓ 6 Year Structural Guarantee
- ✓ Covers Building & Plumbing Fees
- ✓ Home Warranty Insurance
- ✓ 6 Star Energy Rating
- ✓ Soil Testing
- ✓ Bushfire Attack Level (Up To Bal 12.5)
- ✓ Connection of services (Electrical, Gas, Sewer & Phone) up to 10m allowed
- ✓ Engineering
- ✓ Drafting
- ✓ All service costs covered during the build period (Electrical & Water)
- ✓ Member of HIA Group

© THREESIXTYDEGREES AUSTRALIA PTY LTD 2018. PLANS AND FACADES ARE ARTISTS IMPRESSIONS ONLY AND ARE NOT DRAWN TO SCALE. DIMENSIONS, ROOM SIZES AND AREAS MAY VARY.